



Note: Product may vary slightly from image shown.

PRECISION ALIGNMENT READY

Engineered for commercial auto repair facilities demanding precision and heavy-duty lifting. Features built-in slip plates, adjustable turntables, and an ultra-wide runway to accommodate a vast range of vehicles.

IDEAL FOR:

- ✓ Alignment Centers
- ✓ Dealership Service Centers
- ✓ Heavy Duty & Fleet Maintenance

SYSTEM FEATURES

-  **14,000 lbs Lifting Capacity**
Powered by a large heavy duty 5" cylinder and aircraft quality lifting cables.
-  **Ladder Lock System**
Manual release with locking positions every 3.5" starting at 21".
-  **Alignment Configuration**
Built in slip plates and adjustable turntables included standard.
-  **Industrial Grade Finish**
Matted powder coat finish in dark Grey for lasting durability.

- Tilting approach ramps in bright Orange
- 25.5" runway accommodates various vehicle widths
- Will accommodate most dual rear wheel pick up trucks
- Rise Time / Drop Time: 110s

PLEASE NOTE

Lift only - Wheel Alignment Machine is sold separately. Rolling Jack is sold separately.

SPECIFICATIONS

LFPA14 | 14,000 LBS 4-POST ALIGNMENT LIFT

POWER REQUIREMENTS

240V 4HP 15Amp 1 Ph 60Hz

KEY DIMENSIONS

Overall Length:	268.7"
Overall Width:	153.9"
Overall Height:	94.3"
Clearance:	69.3" (under runway at full height)

SHIPPING INFORMATION

Lift Dimensions: 247" x 32" x 42"

Shipping Weight: 5,400 lbs

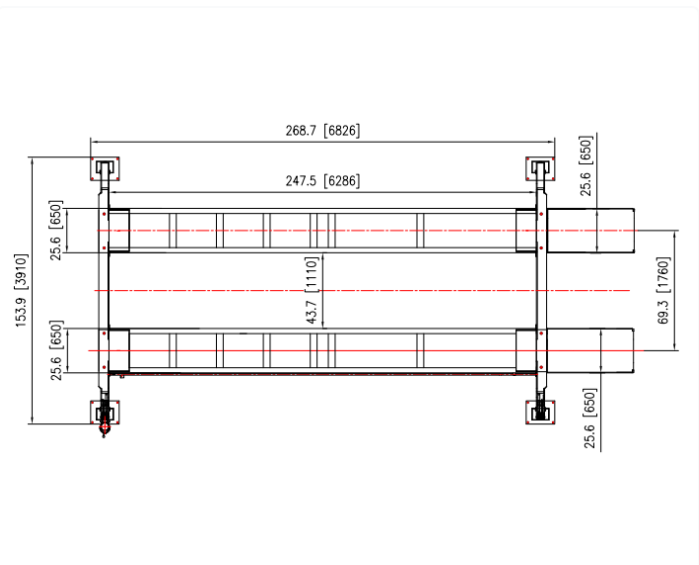
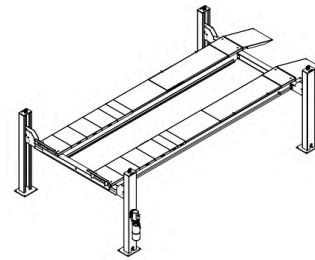
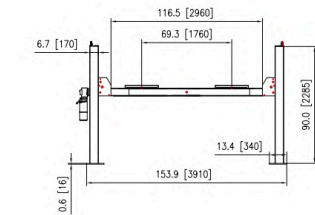
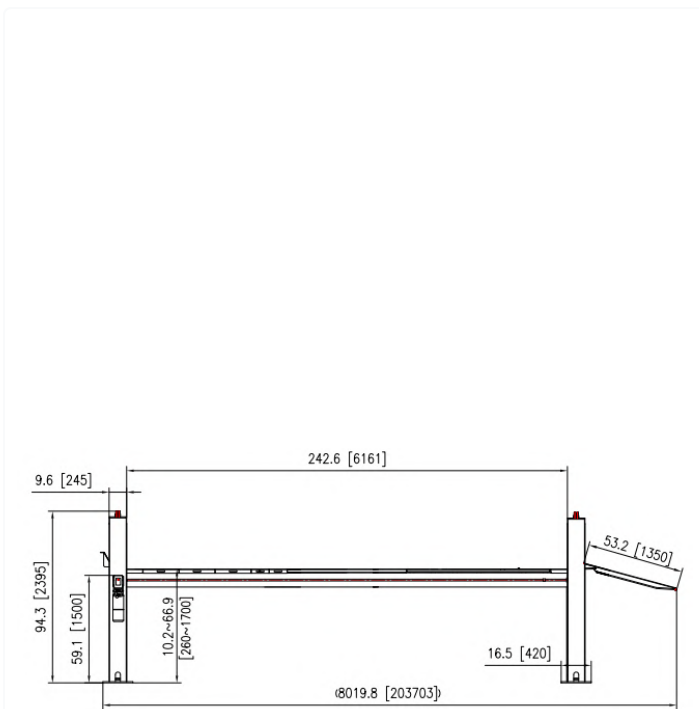
Pump: Attached to lift. Included in dimensions.

RUNWAY SPECIFICATIONS

Runway Dimensions: 25.6" Width x 247.5" Length

Inner Width: 43.7" (between runways)

TECHNICAL CLEARANCES & DIMENSIONS



DIMENSIONS, COLOURS AND ITEMS ARE SUBJECT TO CHANGE WITHOUT PRIOR NOTICE DUE TO OUR CONTINUOUS IMPROVEMENT PROGRAM.



101 Applewood Dr Brighton ON K0K1H0

1-866-219-9991 / 613-475-5400

customer@daytonaproducts.com

www.daytonaproducts.com